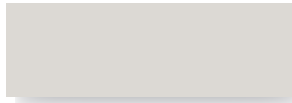
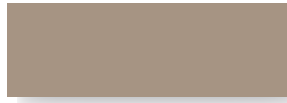


Standard Kynar 500® Coatings

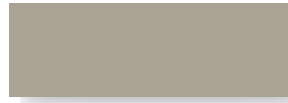
20 or 30-year Commercial, Non-Transferable, Non-Prorated, Limited Warranty
40-Year Residential, Transferable, Non-Prorated Limited Warranty



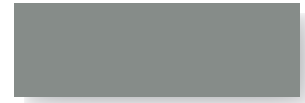
Glacier White SRI-85



Sierra Tan SRI-60



Parchment SRI-58



Sterling Grey SRI-44



Zinc Grey SRI-39



Charcoal Grey SRI-25



Saddle Tan SRI-37



Medium Bronze SRI-36



Tahoe Blue SRI-31



Pacific Blue SRI-26



Hemlock Green SRI-36



Forest Green SRI-24



Graphite Black SRI-26



Dark Bronze SRI-22



Musket SRI-31



Pine Green SRI-25



Matte Black SRI-23



Terra Cotta SRI-43



Tile Red SRI-35



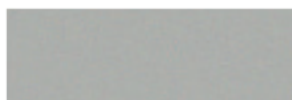
Colonial Red SRI-37



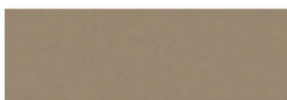
Retro Red SRI-42

SRI = Solar Reflective Index value. These are not paint codes.

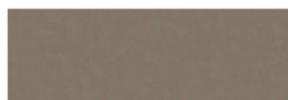
Premium Metallic 500® Coatings *(Premium Pricing Applies)*



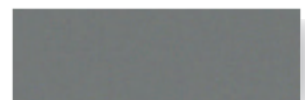
Metallic Silver SRI-60



Champagne SRI-48



Antique Patina SRI-40

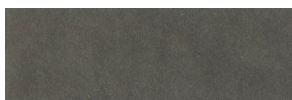


Weathered Zinc SRI-39



Copper Penny SRI-50

Premium Finish *(Premium Pricing Applies)*



Vintage® SRI-19

Vintage® is an innovative coating process over a G-90 metallic-coated steel surface. The process creates shade variations from light to dark, the lighter shade exhibiting a grey tone while the darker shade exhibits a bronze or brown tone. The dynamic, pre-aged appearance makes this a beautiful and durable product choice that is also graffiti resistant. Vintage® comes with a 20 year warranty. Warranty can vary by environment, see TMP website for more information.

NOTE: Due to the coating process, Vintage® has a color range. Color can vary from batch-to-batch and have directional variations. Due to color ranges, color matching of this product is not available.

Weathering Materials *(These materials will change appearance over time)*



16 oz. Copper
20 oz. Copper please inquire
Pure Copper has no warranty



Zincalume® Plus AZ-55/
Galvalume® SRI-65

Zincalume® Plus AZ-55 is a 55% aluminum, 45% zinc metallic coating over steel. Due to batch differences, color or spangle matching of this product is not available.



Other Taylor Metal Companies:

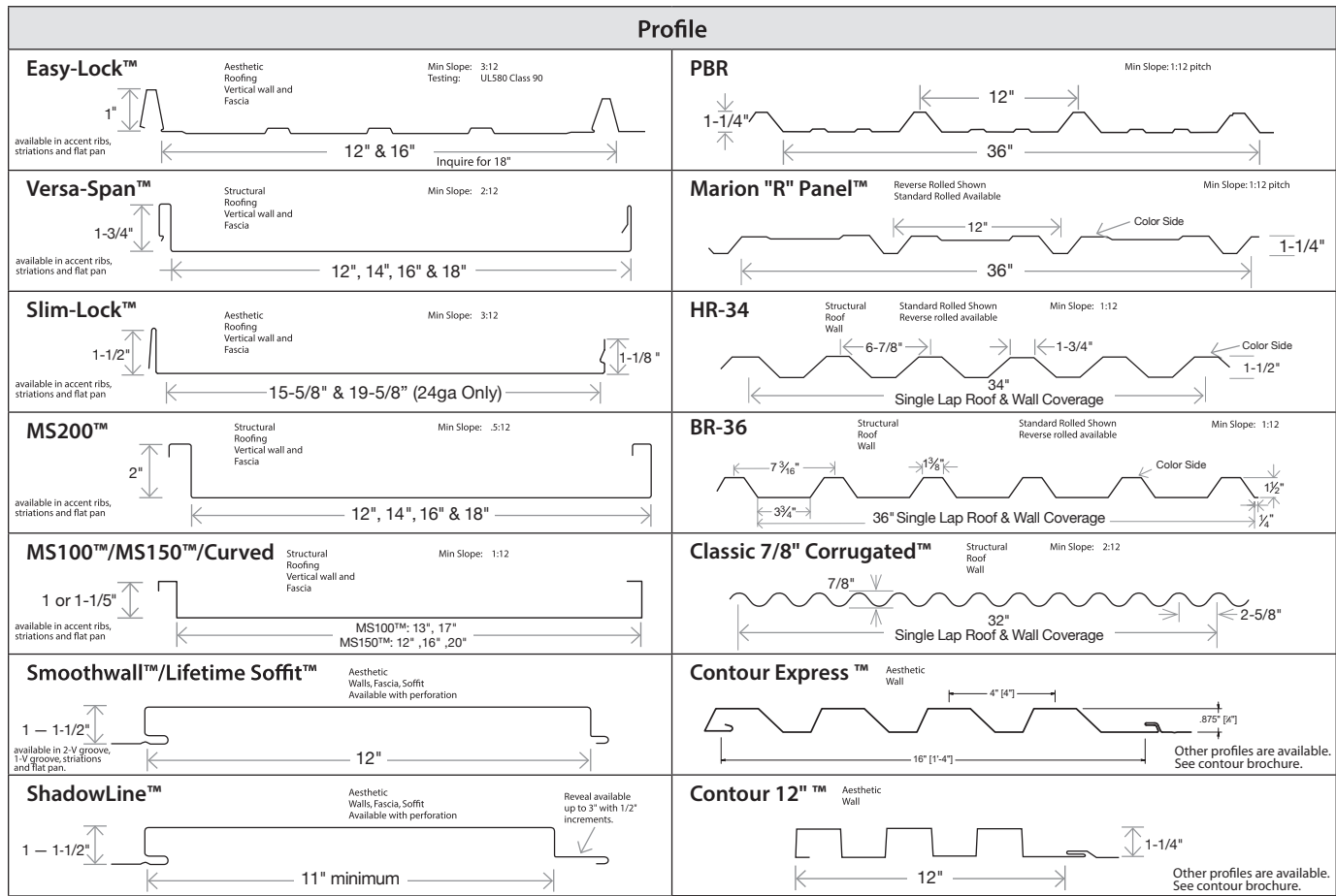


SRI=Solar Reflective Index. SRI values listed above are in accordance with ASTM E1980 and are based on actual testing. (CRRC) Cool Roof Rating Council SRI values (CA Title 24, ENERGY STAR®) are based on the grouping of colors (color families). CRRC SRI values will differ, as each color is not tested in the color family option. Coatings are low gloss 10-15% sheen. These printed chips provide a close representation of the colors. Metal samples are available upon request. Custom colors available. "Oil canning" is an inherent characteristic of roof and wall products, and not a defect, which is not a cause for panel rejection.

Taylor Metal Products Cool Kynar 500®

All Taylor Metal Products Kynar 500® coatings utilize pigments that are specifically designed to reflect infrared light, help reduce the heat gain of a dwelling, and conform with ENERGY STAR® criteria for steep slope cool roofing products.

PVDF is a fluoropolymer that is manufactured under the trademarked name Kynar 500®. Paint finishes containing a **minimum 70% PVDF** resin meet the high-performance weathering criteria established by the American Architectural Manufacturing Association and are allowed to carry the Kynar 500® trademarked name.



Coil Width	OR/WA	Panels listed below are standard size, please inquire for other sizes.	Gauge	Glacier White	Sierra Tan	Parchment	Sterling Grey	Zinc Grey	Charcoal Grey	Saddle Tan	Medium Bronze	Tahoe Blue	Pacific Blue	Hemlock Green	Forest Green	Pine Green	Dark Bronze	Graphite Black	Matte Black	Musket	Terra Cotta	Tile Red	Vintage®	Zincalume® Plus	16 oz. Copper	20 oz. Copper	Colonial Red	Retro Red	Metallic Silver	Champagne	Antique Patina	Copper Penny	Weathered Zinc			
			24	26	24	22	Aluminum	24	22	.032 Aluminum	24	22	.032 Aluminum	24	22	.032 Aluminum	24	22	.032 Aluminum	24	22	.032 Aluminum	24	22	.032 Aluminum	24	22	.032 Aluminum	24	22	.032 Aluminum	24	22	.032 Aluminum		
16"		12" Easy-Lock 12" MS150 13" MS100 1" Smoothwall/ Soffit/ShadowLine	24	X	X	X	X	X	X	X	X	X	X	X	X	X	X	X	X	X	X	X	X	X	X	X	X	X	X	X	X	X	X	X		
			26	X	X	X	X	X	X	X	X	X	X	X	X	X	X	X	X	X	X	X	X	X	X	X	X	X	X	X	X	X	X	X	X	X
20"		15-5/8" Slim-Lock 16" Easy-Lock 16" MS150 17" MS100 12" Versa-Span 12" MS200 14" Versa-Span 14" MS200 12" Reveal 1-1/2" Smoothwall/ Soffit/ShadowLine	24	X	X	X	X	X	X	X	X	X	X	X	X	X	X	X	X	X	X	X	X	X	X	X	X	X	X	X	X	X	X	X	X	
			22	X	X	X	X	X	X	X	X	X	X	X	X	X	X	X	X	X	X	X	X	X	X	X	X	X	X	X	X	X	X	X	X	X
24"		18" Easy-Lock 18" Versa-Span 18" MS200 19-5/8" Slim-Lock 16" Versa-Span 16" MS200 20" MS150 16" Contour 12" Contour	24	X	X	X	X	X	X	X	X	X	X	X	X	X	X	X	X	X	X	X	X	X	X	X	X	X	X	X	X	X	X	X	X	X
			22	X	X	X	X	X	X	X	X	X	X	X	X	X	X	X	X	X	X	X	X	X	X	X	X	X	X	X	X	X	X	X	X	X
			.032 Aluminum	X	X	X	X	X	X	X	X	X	X	X	X	X	X	X	X	X	X	X	X	X	X	X	X	X	X	X	X	X	X	X	X	X
43"		7/8" Corrugated PBR Marion "R" Panel HR-34	24	X	X	X	X	X	X	X	X	X	X	X	X	X	X	X	X	X	X	X	X	X	X	X	X	X	X	X	X	X	X	X	X	
			22	X	X	X	X	X	X	X	X	X	X	X	X	X	X	X	X	X	X	X	X	X	X	X	X	X	X	X	X	X	X	X	X	X
			.032 Aluminum	X	X	X	X	X	X	X	X	X	X	X	X	X	X	X	X	X	X	X	X	X	X	X	X	X	X	X	X	X	X	X	X	X
48"		Flat Sheet 48"W x 120"L	24	X	X	X	X	X	X	X	X	X	X	X	X	X	X	X	X	X	X	X	X	X	X	X	X	X	X	X	X	X	X	X	X	
			22	X	X	X	X	X	X	X	X	X	X	X	X	X	X	X	X	X	X	X	X	X	X	X	X	X	X	X	X	X	X	X	X	X
			.032 Aluminum	X	X	X	X	X	X	X	X	X	X	X	X	X	X	X	X	X	X	X	X	X	X	X	X	X	X	X	X	X	X	X	X	X

Testing information is available on panel specification sheets on TMP website

Zincalume & Zincalume® Plus are registered trademarks of Bluescope Ltd. Galvalume® is a registered trademark of BIEC International, Inc. Vintage® is a registered trademark of Steelscape, Inc. Kynar 500® is a registered trademark of Arkema, Inc. Residential: 40 year, Transferable, Non-Prorated, Limited Manufacturer's Warranty. Commercial: 30 year, Non-Transferable, Non-Prorated, Limited Manufacturer's Warranty

22 Gauge material available, please call to inquire

*** Please inquire for availability and pricing**

August 2023